

# SwiftPAL ShikshaKa Teeka

THE LEARNING DOSE THAT WORKS  
PERSONALISED. ADAPTIVE. LEARNING. PROVEN.



ConveGenius.AI



## The Dose That Bridges the Learning Gap

Across India, classrooms are filled with learners at different levels, but all of them receive the same lesson, in the same way, at the same time.



**Some race ahead.**



**Some fall behind.**



**Most fall silent.**

As children fall behind, learning poverty spreads - an epidemic of widening learning gaps that worsens with time. Left untreated, these gaps deepen year after year, just like an illness without a vaccine.

## SwiftPAL changes that with a targeted, adaptive, and pedagogically sound “dose” of learning.

Just like a medical teeka (vaccine) strengthens immunity, SwiftPAL strengthens every child's learning.

### Each SwiftPAL Dose Is



#### **Personalised**

Maps to what the child actually needs



#### **Adaptive**

Adjusts based on responses in real-time



#### **Focused**

Builds mastery one concept at a time



#### **Playful**

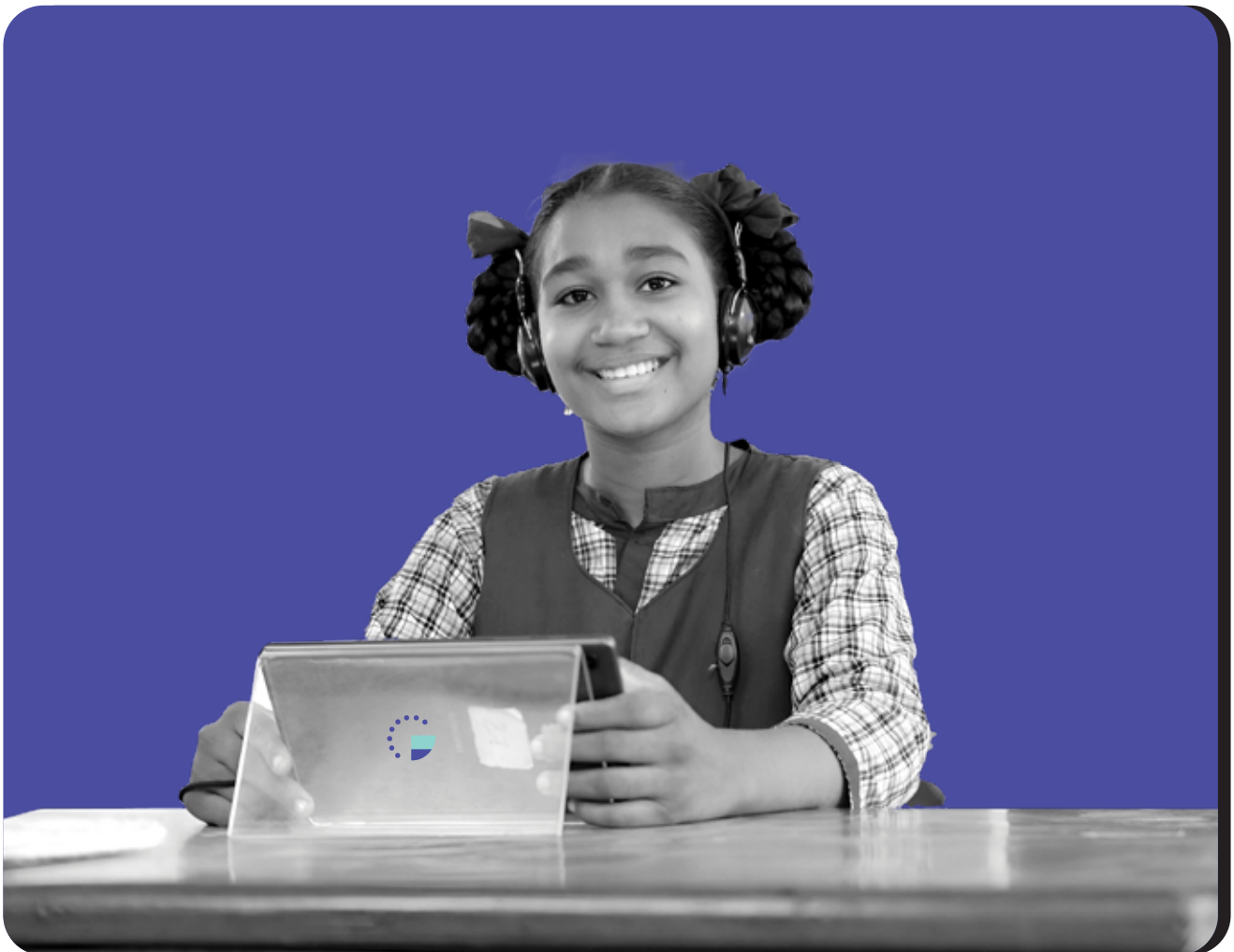
Designed as a journey, not a test

No more one-size-fits-all.  
Just the right doses, for the right learner, ensuring that  
learning grows stronger with every dose.

# What is SwiftPAL?

SwiftPAL is ConveGenius.AI's flagship Personalised Adaptive Learning platform, rooted in the science of learning and evidence-based pedagogy. Just like a vaccine is designed through years of Science, SwiftPAL is grounded in 12 years of research, millions of learning data points, and deep on-ground implementation experience that powers every stage of the learning journey.

SwiftPAL is more than technology. Unlike one-size-fits-all EdTech, SwiftPAL combines proven pedagogy with adaptive technology to deliver measurable learning gains at scale.



It is a solution trusted by governments,  
validated by independent research,  
and designed to work in Indian classrooms.

## It is a PAL that Works.

# What Makes the Learning Dose Work?

Every effective vaccine has 4 parts.  
So does Shiksha Ka Teeka.

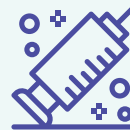
1



## The Formula (Pedagogy)

Based on Mastery Learning and reinforcement. Each “dose” is precise: one micro-skill at a time, moving from Learn to Practice to Master to Advance.

2



## The Delivery System (Adaptive Tech)

Just as the vaccines reach the right spot in the body, SwiftPAL identifies the right learning gaps, adapting tap by tap, guiding teachers with personalised TLM and insights, and administrators with monitoring dashboards.

4



## The Field Rollout (People + Classrooms)

Like health workers in a vaccination drive, SwiftPAL’s field staff ensure every school, teacher, and learner receives the Shiksha ka Teeka, fitting smoothly into school timetables in low-resourced environments.

3



## The Experience (Joyful Learning)

No child fears the teeka when it comes with a smile. Game-like missions, badges, and streaks feel like play, but work like science.

# The Clinical Trial: Proof That PAL Works

SwiftPAL was part of a large-scale Randomised Controlled Trial conducted by Nobel Laureate and Economist **Prof. Michael Kremer** in the government schools of Andhra Pradesh in India.

## The Findings



2.3x faster learning compared to peers



Every hour on SwiftPAL = 0.06 years (22 days) of additional learning



Learning gains were higher for girls than for boys



Grade 6 students gained 2 years in one, showing some value to starting PAL early



Improved learning for all ability levels, from low to high performers

After 17 months, the gain in test scores in the [PAL] schools corresponded to almost an additional 2 years of extra learning beyond what would have been expected over the period.

**Prof. Michael Kremer**

Nobel Laureate and Economist

(University Professor, UChicago's Kenneth C. Griffin Department of Economics and Harris Public Policy; And Director, Development Innovation Lab at the University of Chicago)



## A Teeka with No Side Effects

SwiftPAL integrates seamlessly within the current teaching-learning processes. Even after replacing 2 weekly periods per subject, SwiftPAL students performed just as well in school exams as their peers.

# Proven at Scale Across States

The Learning Dose is already reaching millions.

**Over 2 Million Students**

**22 States | 176 Districts | 15,000+ Schools**

## Rajasthan Mission Buniyaad PAL Program

India's largest ICT Lab-based PAL program by the Children's Investment Fund Foundation & Government of Rajasthan.

**Result: 2× higher learning gains; ~6 months of extra schooling in 6 months.**



## Uttar Pradesh Outcome-Linked PAL Program

India's first Social Impact Bond for PAL by NITI Aayog and the Government of Uttar Pradesh.

**Result: 3×—8× higher learning gains; ~2.1 years of extra schooling in 22 months.**



## Gujarat, Maharashtra, and Telangana

Multiple other PAL programs as supported by MSDF, UBS Optimus Foundation and partner organisations.



## Andhra Pradesh AP PAL Program

India's first state-funded PAL program by the Government of Andhra Pradesh.

**Result: 2.3× faster learning; ~2 years of extra schooling in 17 months.**





# Why It Matters for India's Future

Learning poverty isn't just an education crisis - it is an economic one.



Reduced Future Earnings



Lower Workforce Productivity



Slower National Growth

A World Bank report shows that a

**0.2 SD\* drop in school learning can cut future earnings by 6.5%.**

This demonstrates that even modest learning gains can have a powerful economic impact.



SwiftPAL has already demonstrated such gains with proven and sustained results in a short span of time. By accelerating learning gains at scale, SwiftPAL directly contributes to India's long-term economic growth.

## Cost Effective

At only **INR 1,700 - 2,100 (USD 20 - 25) per child per year**, PAL delivers outcomes well within government budgets.

*\*Source: Education Finance Watch 2023*

<https://documents1.worldbank.org/curated/en/099103123163755271/pdf/P17813506cd84f07a0b6be0c6ea576d59f8.pdf>

# About ConveGenius.AI

ConveGenius is a leading EdTech social enterprise on a mission to make high-quality education accessible and equitable. Over the past decade, we've reached more than 150 million learners across India, building evidence-backed solutions that work in low-resource contexts and at a national scale for a country as large as India.

Founded in 2013 and headquartered in Noida, India, ConveGenius has developed platforms such as SwiftChat, SwiftPAL, and PinAcLe®. These integrate conversational AI, real-time learning analytics, and psychometrics such as Item Response Theory, alongside deep implementation expertise, to empower students, support teachers, and strengthen education systems.

Our work has been recognised globally, including the CIPS Innovation Award in Education, celebrating SwiftPAL's ability to take learning to the remotest schools of India.



**Despite challenges of terrain and access, we have proven that adaptive technology and pedagogy can reach every child.**

**Jairaj Bhattacharya**

Co-founder & CEO, ConveGenius Group



## SwiftPAL is

- Ready to scale across states and school systems
- Designed to work in the government schools of India
- Built with heart, backed by data and program support

## Partner with SwiftPAL.

Let's bridge the learning gap, reduce inequality, and unlock India's true potential with **Shiksha Ka Teeka**.

---

**rahul@convegenius.ai**  
convegenius.com

